

FTGM - Faculty

G.D. Aquaro, MD
A. Barison, MD, Ph.D
V. Barra, TR
M. Bertasi, TR
A. Clemente, MD
D. De Marchi, TR
M. Emdin, MD, Ph.D
A. Gimelli, MD
C. Grigoratos, MD
P. Keilberg, TR
E.M. Pasanisi, MD
A. Pepe, MD, Ph.D
G. Todiere, MD, Ph.D
V. Meloni, Nurse

Scientific Coordinator

A. Pepe, MD, Ph.D
Tel +39 050 3152817
Mail alessia.pepe@ftgm.it

Scientific Secretary

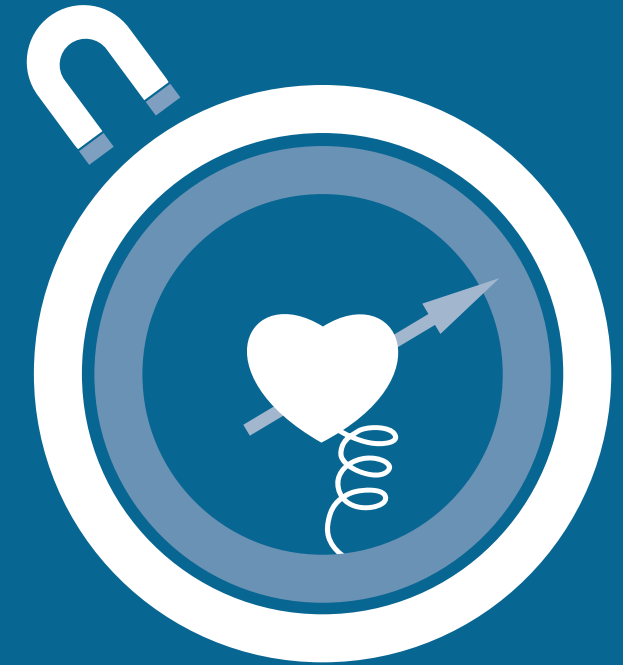
G. D. Aquaro, MD



Fondazione Toscana
Gabriele Monasterio

Organization Secretary

Claudia Santarlaschi
Tel +39 050 3152824
Fax +39 050 3153535
Mail mrilab@ftgm.it



Training Stress Cardiac Magnetic Resonance

20-24 March 2017

Magnetic Resonance Lab
Area della Ricerca CNR di Pisa
Via Moruzzi, 1

PROGRAM

Monday

08.50-09:00	Welcome – <i>A. Pepe, MD, Ph.D and G.D. Aquaro MD</i>
09:00-12:30	Stress MRI: acquisition living cases <i>G.D. Aquaro MD, V. Barra TR</i>
12:30-13:30	Lunch
13:30-14:00	MR safety and Stress MRI patient preparation – <i>V. Meloni, Nurse</i>
14:00-15:00	Contrast Media – <i>A. Pepe MD, Ph.D</i>
15:00-16:00	Stress MRI using dobutamine: why and how to do – <i>G.D. Aquaro, MD</i>
16:00-16:30	Stress MRI using dobutamine – Protocol acquisition – <i>D. De Marchi, TR</i>
16:30-18:00	Stress MRI: analysis living cases <i>G.D. Aquaro, MD</i>

Tuesday

09:00-13:00	Stress MRI: case reading <i>A. Pepe MD, Ph.D</i>
13:00-14:00	Lunch
14:00-14:45	Stress MRI using adenosine: why and how to do – <i>A. Pepe MD, Ph.D</i>
14:45-15:30	Stress MRI using adenosine – Protocol acquisition – <i>P. Keilberg, TR</i>
15:30-18:00	Stress MRI Case reading <i>G. Todiere, MD, Ph.D</i>

Wednesday

09:00-13:00	Stress MRI case reading - <i>G.D. Aquaro, MD</i>
13:00-14:00	Lunch
14:00-14:45	Stress MRI using dipiridamole: why and how to do – <i>A. Pepe MD, Ph.D</i>
14:45-15:30	Stress MRI using dipiridamole – Protocol acquisition – <i>D. De Marchi, TR</i>
15:30-18:00	Stress MRI case reading <i>G. Todiere, MD, Ph.D</i>

Thursday

09:00-13:00	Stress MRI acquisition and analysis of living cases <i>A. Pepe MD, Ph.D; M. Bertasi, TR</i>
13:00-14:00	Lunch
14:00-15:30	Stress MRI case reading <i>C. Grigoratos, MD</i>
15:30 -17:00	Stress MRI case reading <i>A. Barison, MD, Ph. D</i>

Friday

09:00-10:00	Why a coronary reserve test: the clinician's point of view – <i>M. Emdin, MD, Ph.D</i>
10:00-11:00	Eco stress: trade off among cost, safety and accuracy – <i>E.M. Pasanisi, MD</i>
11:00-12:00	Stress myocardial scintigraphy: trade off among cost, safety and accuracy <i>A. Gimelli, MD</i>
12:00-13:00	Cardiac CT: beyond the coronary stenosis evaluation – <i>A. Clemente, MD</i>
13:00-13:30	Closing remarks - <i>A. Pepe, MD, Ph.D and G.D. Aquaro MD</i>

Objective

This program is intended for cardiologists and radiologists wishing to gain a focused insight or to refresh their experience in stress Cardiovascular Magnetic Resonance.

Setting

The CMR Unit in Pisa is an international referral centre, performing more than 2000 cardiovascular CMR studies per year covering a wide range of clinical issues.

The fee will cover:

- Tutor assistance
- Hands on CMR acquisitions and analysis
- Case reading
- Stress CMR and multimodality lectures
- Teaching material
- Lunch ticket
- Social dinner
- Attendance certificate

Cost

€ 1250 + 22% VAT for each physician € 800 + 22% VAT for each accompanying technical radiologist or nurse
Maximum 9 participants CME credits will be provided if required with an extra-fee of € 200 + 22% VAT for each participants.

Location

Magnetic Resonance Lab
Area della Ricerca CNR di Pisa
Via Moruzzi, 1 Pisa, Italy

